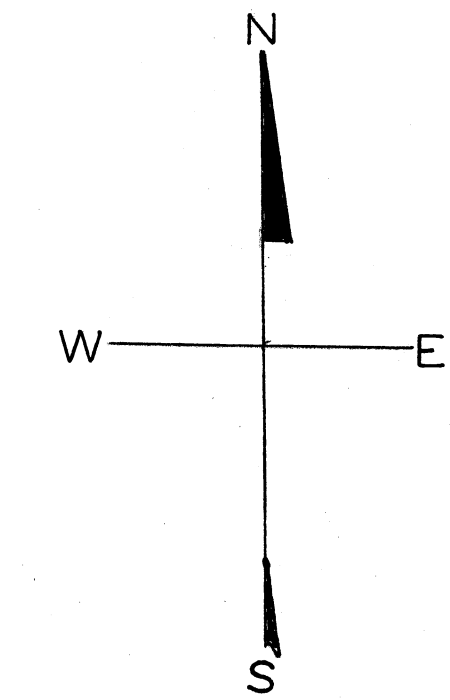
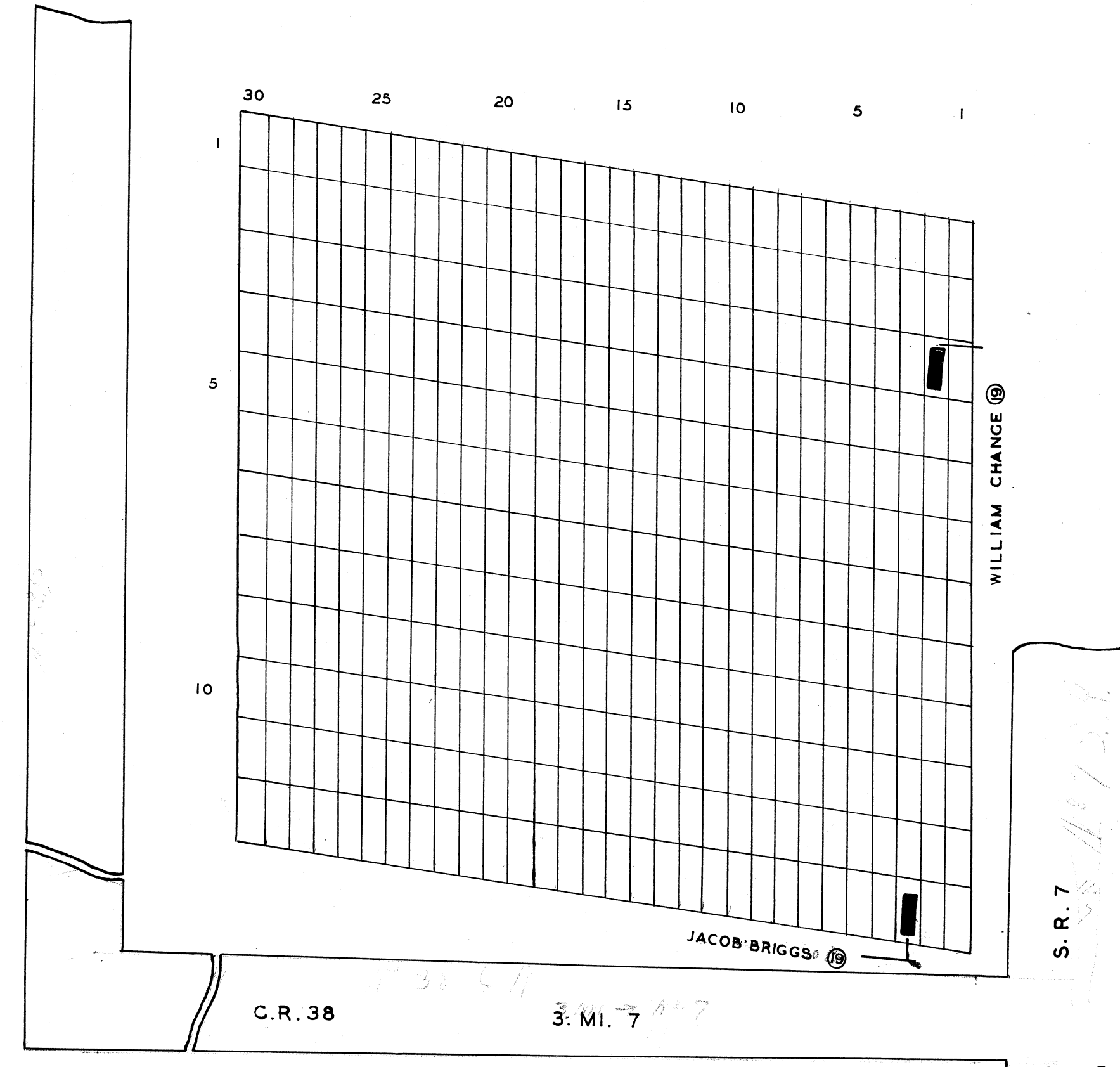


**AMBLER
CEMETERY**
BELMONT CO. MEAD TWP.

OFFICIAL PROJECT NOS. 465-42-3-467
665-42-3-232

LEGEND	HISTORY
① REVOLUTIONARY WAR.	ESTABLISHED ABOUT
② WAR OF 1812.	1867
③ WAR WITH MEXICO.	ORIG. PART OF THE
④ CIVIL WAR.	FIRST SEVEN RANGES
⑤ SPANISH-AM. WAR.	
⑥ WORLD WAR.	

SCALE 20' = 1" .059 ACRE.

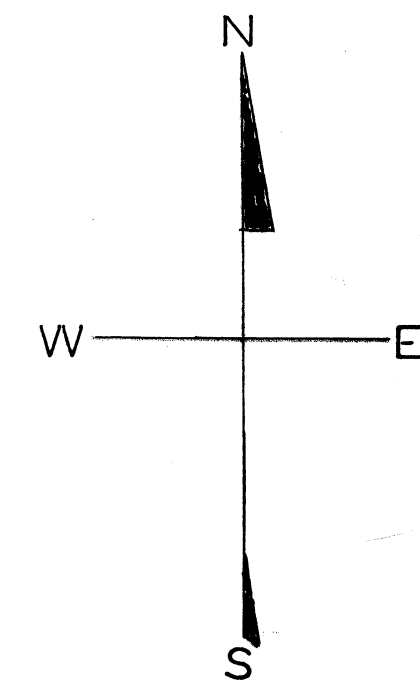
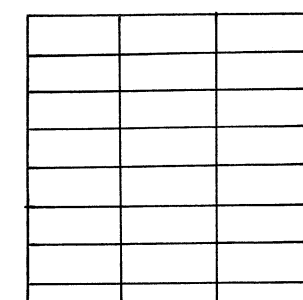


**DUNFEE
CEMETERY**
BELMONT CO. MEAD TWP.

OFFICIAL PROJECT NOS. 465-42-3-467
665-42-3-232

LEGEND	HISTORY
① REVOLUTIONARY WAR.	ESTABLISHED ABOUT
② WAR OF 1812.	1812
③ WAR WITH MEXICO.	ORIG. PART OF THE
④ CIVIL WAR.	FIRST SEVEN RANGES
⑤ SPANISH-AM. WAR.	
⑥ WORLD WAR.	

SCALE 20' = 1" .33 ACRE.

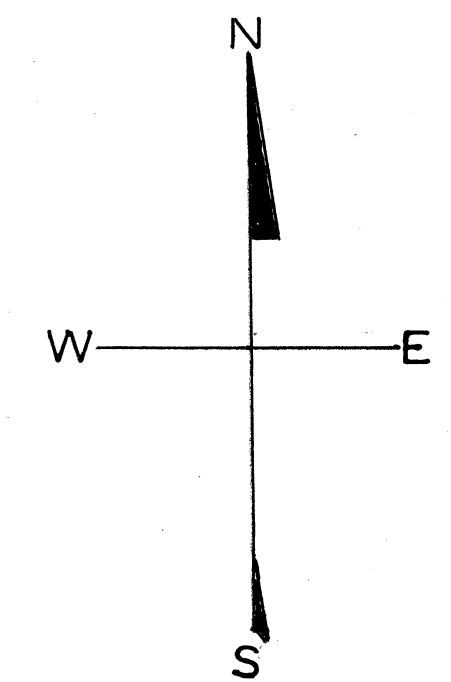
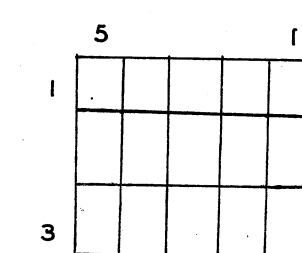


**DINSMORE
CEMETERY**
BELMONT CO. MEAD TWP.

OFFICIAL PROJECT NOS. 465-42-3-467
665-42-3-232

LEGEND	HISTORY
① REVOLUTIONARY WAR.	ESTABLISHED ABOUT
② WAR OF 1812.	1864
③ WAR WITH MEXICO.	ORIG. PART OF THE
④ CIVIL WAR.	FIRST SEVEN RANGES
⑤ SPANISH-AM. WAR.	
⑥ WORLD WAR.	

SCALE 20' = 1" .021 ACRE.



**DUNFEE
CEMETERY**
BELMONT CO. MEAD TWP.

OFFICIAL PROJECT NOS. 465-42-3-467
665-42-3-232

LEGEND	HISTORY
① REVOLUTIONARY WAR.	ESTABLISHED ABOUT
② WAR OF 1812.	1820
③ WAR WITH MEXICO.	ORIG. PART OF THE
④ CIVIL WAR.	FIRST SEVEN RANGES
⑤ SPANISH-AM. WAR.	
⑥ WORLD WAR.	

SCALE 20' = 1" .01 ACRE.