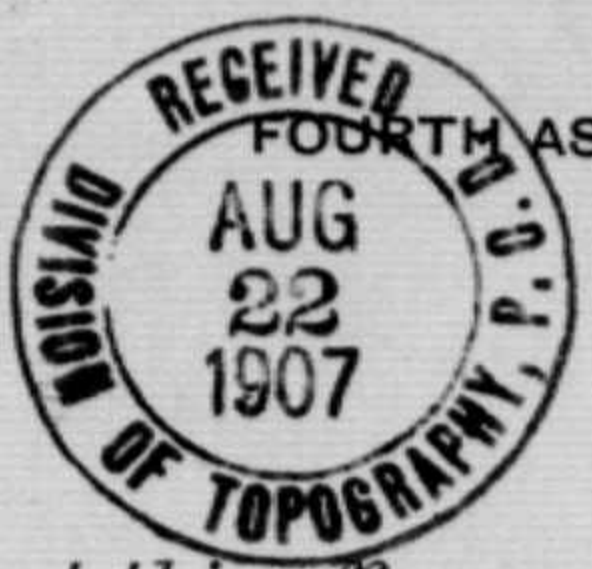


RML

B

POST OFFICE DEPARTMENT
OFFICE OF THE
FOURTH ASSISTANT POSTMASTER GENERAL
WASHINGTON

DIVISION OF TOPOGRAPHY



AUG 14 1907

Sir:

In order that this office may determine, with as much accuracy as possible, the relative positions of Post Offices, so that they may be correctly delineated on its maps, please carefully answer the questions below, and furnish the diagram on the other side, returning the same as soon as possible, verified by your signature and dated.

Very respectfully,

J. P. Graw

Fourth Assistant Postmaster General.

To POSTMASTER AT Bridgeport,
Belmont Co,
Ohio.

The (P. O. Dept.) name of my Office is Bridgeport, Ohio

If the town, village, or site of the Post Office be known by another name than that of the Post Office, state that other name here: _____

The P. O. is situated in the S. E. quarter of Section No. 28, in Township Pease 3 (~~north~~ or south), Range 2 (east or ~~west~~), County of Belmont, State of Ohio.

The name of the most prominent river near it is Ohio

The name of the nearest creek is Wheeling

This Office is 400 ft. from said river, on the west side of it, and is 200 ft. miles from said nearest creek, on the South side of it.

My Office is on Mail Route No. 131075-31600-131041

My Office is a Special Office supplied from _____ miles distant.

The name of the nearest Office on my route is Martin Ferry O., and its distance is 2 miles, by the traveled road, in a north direction from this, my Office.

The name of the nearest Office, on the same route, on the other side, is Wheeling Wm and its distance is 1 miles in a East direction from this, my Office.

The name of the nearest Office off the route is Colerain, and its distance by the most direct road is 6 miles in a n.w. direction from this, my Office.

The name of the nearest railroad is C & P.

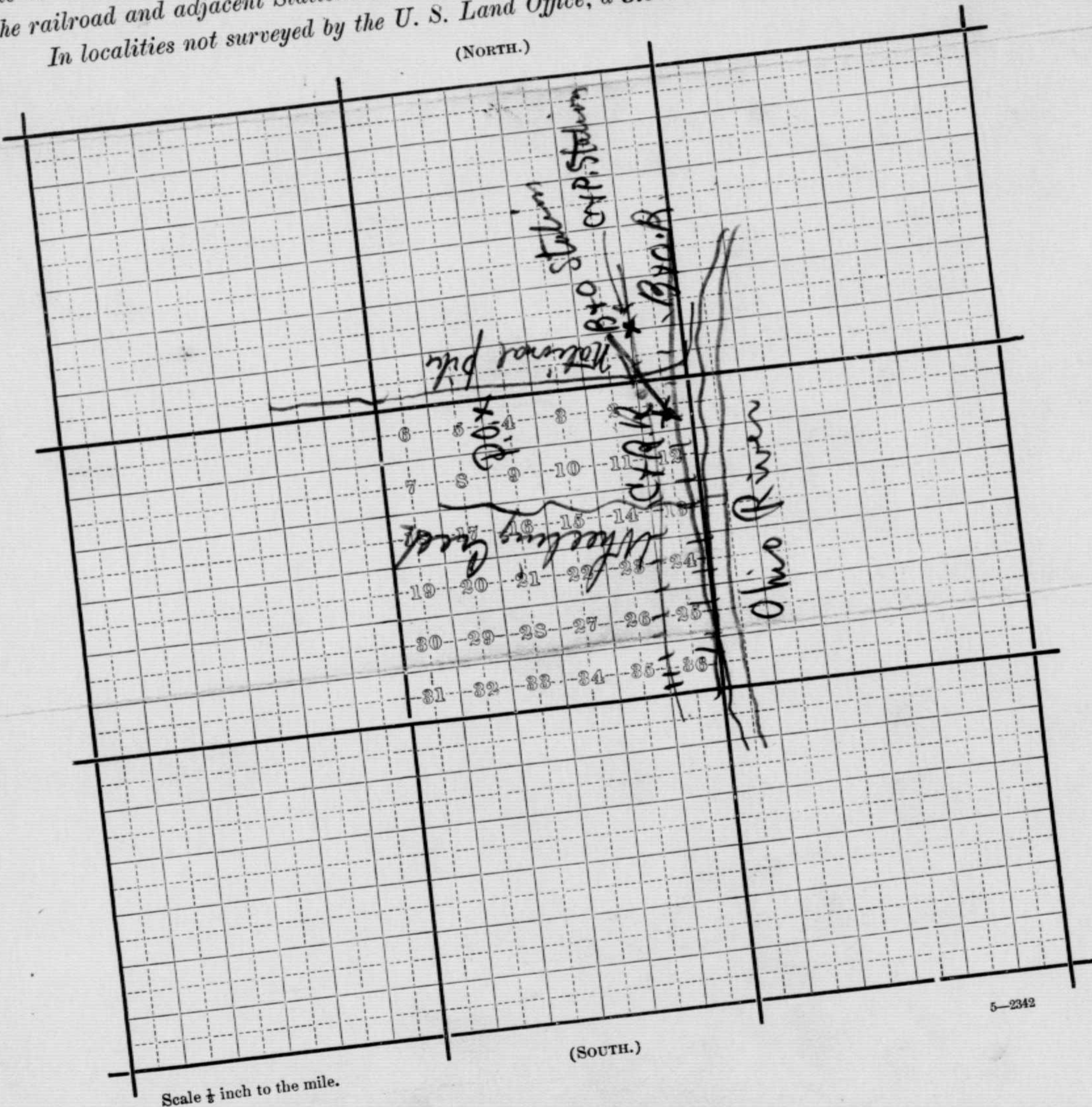
If on the line of or near the railroad, on which side and how far from the track is your Office located? 305 feet from C & P. and 364 ft. from B. & O. on the west side.

(Signature of Postmaster.) J. J. Henkle

(Date.) Aug. 21-1907

Diagram showing the site of the Bridgeport Post Office
 in Township Pease 3 (N. or S.), Range 2 (E. or W.),
 of Belmont County of Ohio, State
 of Ohio, with the adjacent Townships and Post Offices.

It is requested that the exact site of your Post Office, as also the roads to the adjoining
 Offices, and the rivers and creeks, be marked on this diagram, to be returned as soon as possi-
 ble to the Topographer's Office, Post Office Department. If on, or near a railroad, mark
 the railroad and adjacent Station accurately.
 In localities not surveyed by the U. S. Land Office, a sketch map is requested.



G

Please answer soon.

Post Office Department,

TOPOGRAPHER'S OFFICE,

Washington, April 9th, 1878.



Sir:

To enable the Topographer of this Department to determine, with as much accuracy as possible, the relative positions of Post Offices, so that they may be correctly delineated on its maps, the Postmaster General requests you to fill up the spaces and answer the questions below, and return the same, verified by your signature and dated, under cover to this Office.

Respectfully, &c.,

WU

Topographer P. O. Dept.

TO POSTMASTER AT Bridgeport
Belmont Co.,
Ohio

The (P. O. Dept.) name of my Office is Bridgeport

* Its local name is Bridgeport

It is situated in the South East quarter of Fractional Section No. 28, in Township Three (3) (north or south), Range Two (2) (east or west), County of Belmont, State of Ohio

The name of the most prominent river near it is Ohio

The name of the nearest creek is Indian Wheeling

This Office is on Bank ~~from~~ miles from said river, on the west side of it, and is on the bank miles from said nearest creek, on the north side of it.

The name of the nearest Office on route No. Not numbered is McClairsville, and its distance is Ten miles, by the traveled road, in a westerly direction from this my Office.

The name of the nearest Office, on the same route, on the other side, is Wheeling W. Va and its distance is one miles in a Easterly direction from this my Office.

The name of the nearest Office off the route is Martins Ferry, and its distance by the most direct road is one & 1/2 miles in a Northerly direction from this my Office.

This Office is at a distance of Seventy five yards from the Passenger Station of the Cleveland & Pittsburgh Railroad, on the west side of the railroad.

State, under this, the names of all other Offices near your Office, in different directions from it, and their distances from it by the most direct roads. Bellvue four miles south = Colrain 6 miles north west

* If the town, village, or site of the Post Office, be known by another name than that of the Post Office, state that other name here, that it may be identified on the map of the State (or Territory).

A diagram of the township and sections (or, where the land is not so divided, a sketch map,) showing the precise location of your Office, together with the adjoining Post Offices, towns, or villages, the roads, railroads, and larger streams or creeks, in addition to the above, will be useful, and is desired.—(See diagram blank accompanying this, to be filled up.)

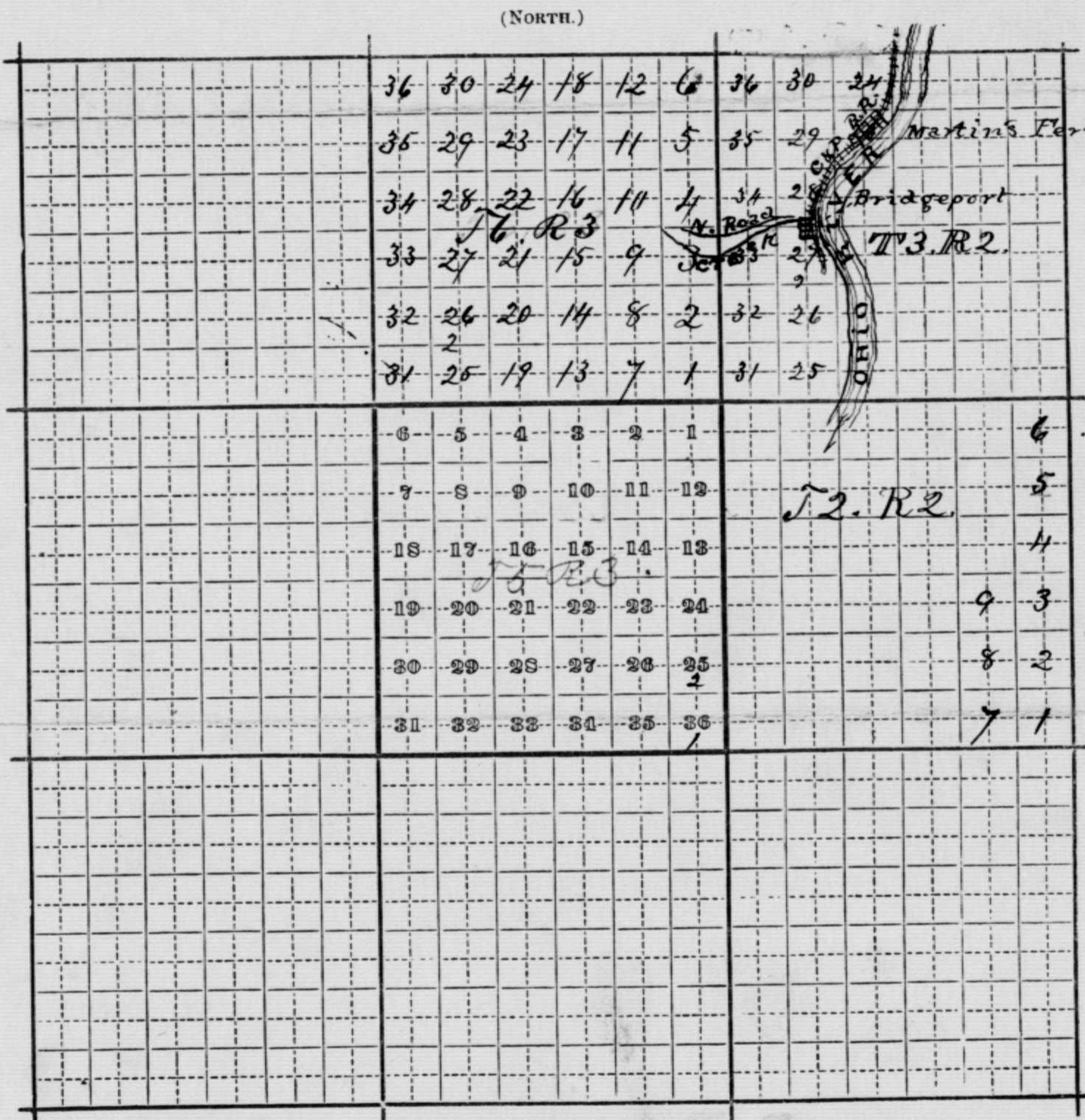
(Signature of Postmaster.) J. M. Todd

(Date.) April 20 By S. A. Clemens asst

Mail Route from Wheeling to McClairsville is what is called a messenger route no contract

Diagram showing the site of the Bridgeport Post Office
in Township (3) Three Range (2) Two of Principal
Meridian, County of Belmont, State
of Ohio, with the adjacent Townships and Post
Offices.

It is requested that the exact site of the proposed, or existing Post Office, as also the roads to the adjoining Offices, and the larger streams or rivers, be marked on this diagram, to be returned as soon as possible to the Post Office Department. If on, or near a railroad, mark the railroad and adjacent Station accurately. T4. R2.



Scale $\frac{1}{4}$ inch to the mile.

You will note that the sections are not numbered as the government now requires them to be, neither was there any Meridian or Post line. These lands were sold from office in New York. Marietta & Steubenville.

VKB.

B.

TOPOGRAPHER,
JAN 8 1902
P. O. DEPT.

U. S. Post Office Department,
TOPOGRAPHER'S OFFICE,

Washington, D. C., Jan. 4th, 1902

Sir:

By direction of the Postmaster General, you are desired to give answer to the underwritten inquiry by writing it opposite thereto, or on the next page, and returning this sheet to this Office, containing such answer, signed and dated.

Respectfully,

A. W. Haake

Topographer Post Office Department.

To Postmaster

Bridgeport

Belmont Co., Ohio

On which side of the Cleveland Lorain & Musking R.R. is the electric line between your office and Dill?

Please answer immediately!

Answer of A. J. Cindler P.M.

Dated 1/7 1902, 189

On the north side.