

**Post Office Department**  
**FOURTH ASSISTANT POSTMASTER GENERAL**

Washington

RETURN TO  
 DIVISION OF TOPOGRAPHY

Postmaster,

**FLUSHING**

**SEP 15 1939**

**OHIO.**

The following information is required in order that your post office may be shown in its proper location on postal maps. Please complete this form immediately and return it without delay with the map or sketch described on the reverse side. A letter of reply is not necessary.

F.  
 [Signature]  
 FOURTH ASSISTANT POSTMASTER GENERAL.

1. Street address of post office High County Belmont
2. Township Flushing (If location is described by section, township, and range, fill in line 3.)
3. NW quarter of section 20 Township 9 N. or S. 9 Range 5 E. or W. E
4. Nearest adjoining county Harrison How far: Shortest air distance 2 mi By road 2 mi
5. Nearest U. S. or State highway Ohio State 149 Direction from P. O. Adover Distance 0
6. Name of nearest railroad station Flushing Ohio Name of railroad Baltimore and Ohio
7. Distance by road to railroad station 3062 feet Direction from post office West
8. Shortest air distance to nearest tracks 2500 ft. Direction from post office West
9. Nearest streams or bodies of water (state whether river, creek, branch, lake, ocean, etc.):

Name	Direction from post office	Distance
<u>Trail Fork Creek</u>	<u>West</u>	<u>4000 feet</u>
<u>Ohio River</u>	<u>East</u>	<u>28 miles</u>

10. Post offices nearest to your office (one in each general direction):

Name	County	Direction from your office	Distance by road
<u>Halloway</u>	<u>Belmont</u>	<u>North</u>	<u>5 miles</u>
<u>Lafferty</u>	<u>Belmont</u>	<u>Southeast</u>	<u>3 miles</u>
<u>Morristown</u>	<u>Belmont</u>	<u>Southwest</u>	<u>6 miles</u>
<u>New Athens</u>	<u>Harrison</u>	<u>East</u>	<u>5 miles</u>

11. How is mail supplied to your office? Railroad and Star Route From where? Flushing, Ohio  
 (Railroad, star route, rural route, etc.) Dunsmuir, Ohio

POST OFFICE DEPT.  
 Fourth Assistant P. M. G.  
**SEP 18 1939**  
 Division of Topography  
 44-S

(Date) 9-16-1939  
 (Signed) Meredith D. Morris  
 Post office Flushing, Ohio  
 [Signature]  
 Postmaster.

**IMPORTANT.**—A map or sketch showing the location of your post office must be submitted with the return of this paper. A printed map, such as prepared by the county or city engineer, is preferred, if it can be furnished without expense to the Department. Be sure, however, to mark on it the exact site of the post office, placing a small dot in the proper square or block and on the proper side of the street.

If a separate map cannot be furnished it is necessary to submit a sketch as described below.

These diagrams are furnished simply to make it easier to draw a sketch that will show correct distances from your post office.

### SQUARE DIAGRAM

Use this diagram if your post office is located in an area described by section, township, and range, and you have filled in line 3 on the other side. Otherwise use the circular diagram.

Place a small dot representing your post office in the proper quarter-section and fill in the blanks for township and range numbers.

Then draw the following features: (Note that one-half inch on the paper equals 1 mile on the ground.)

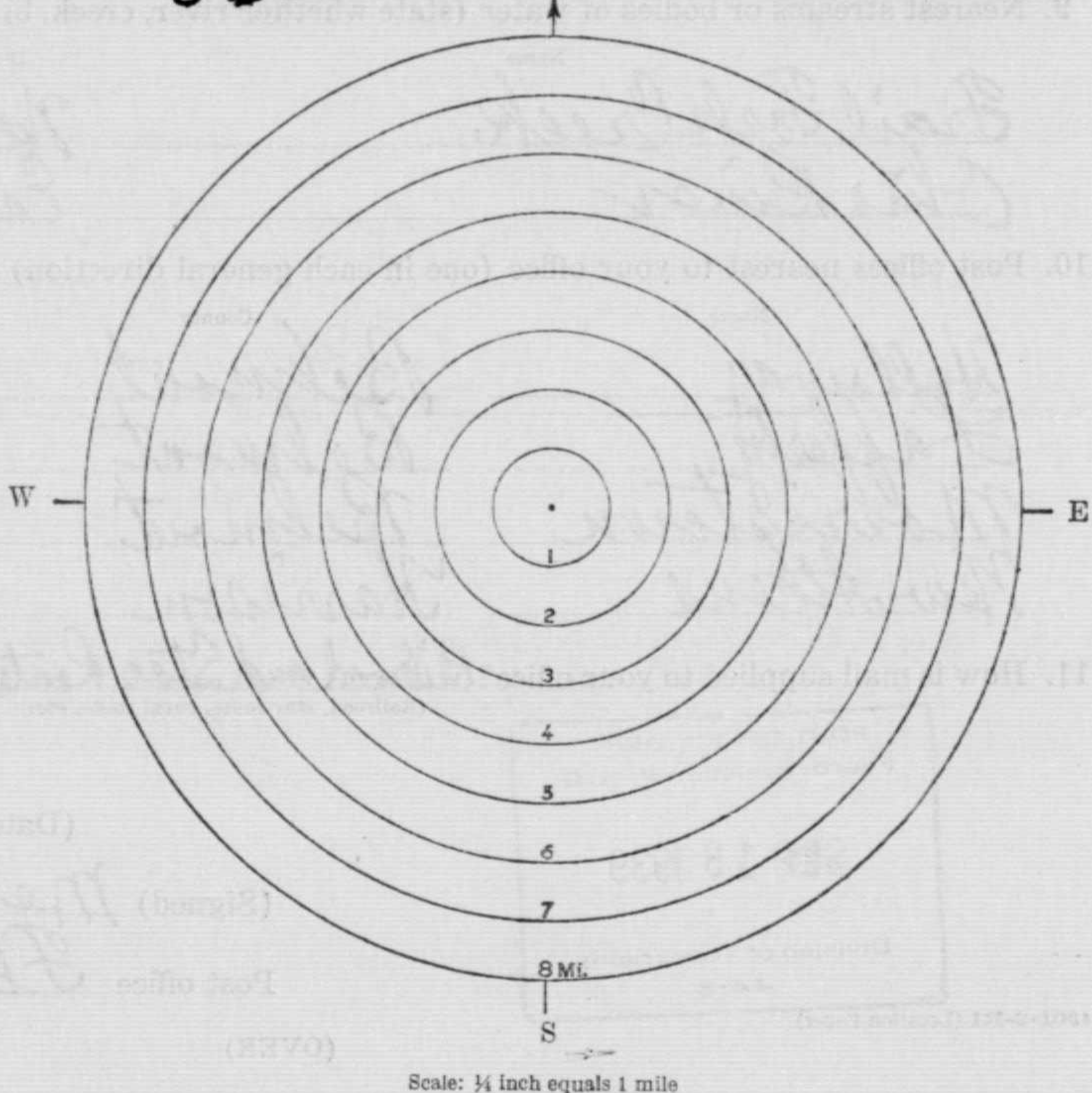
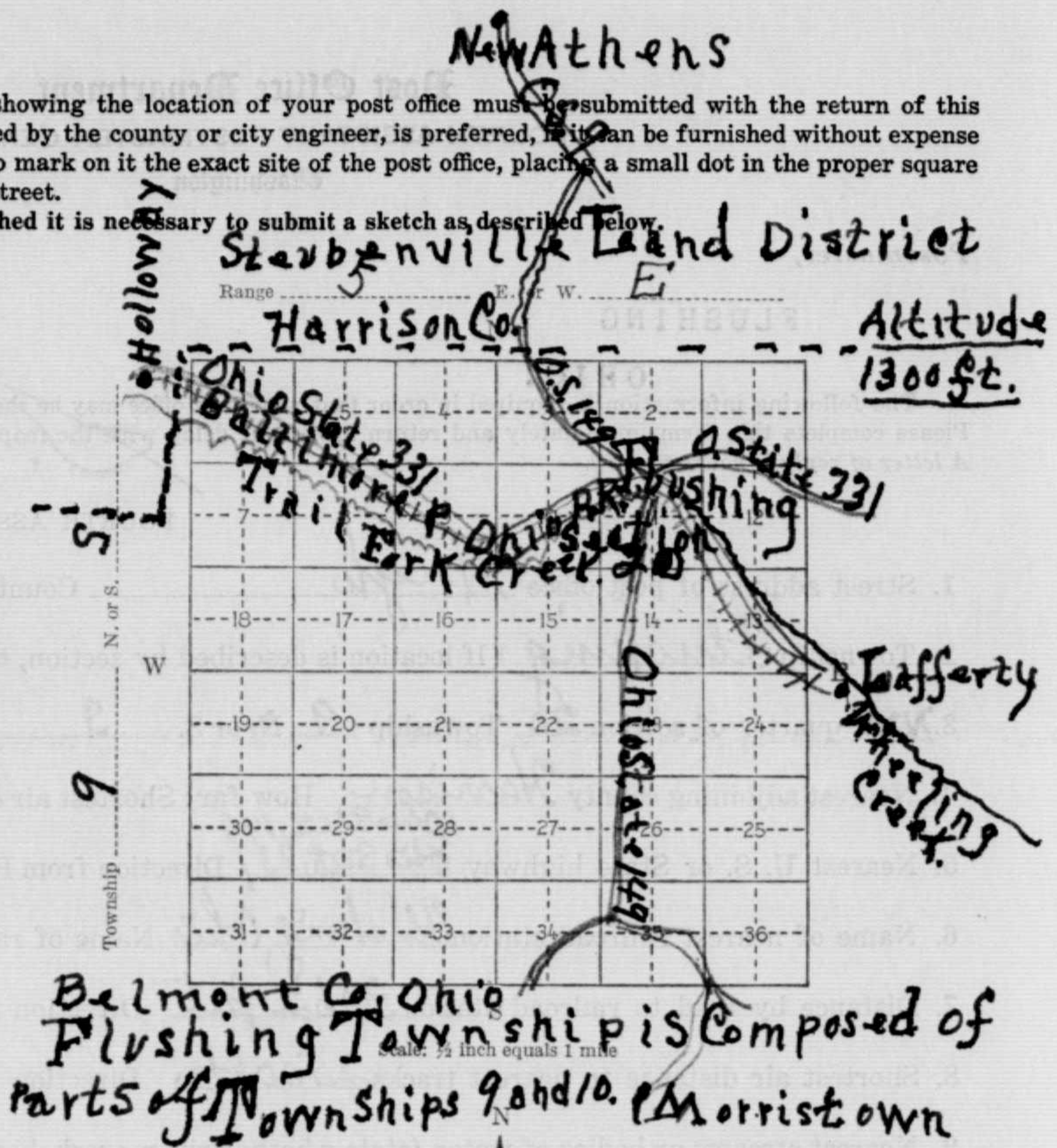
- Adjacent post offices (show with small dots and name).
- Railroads (show by single line with cross marks; name).
- Highways (show by double lines close together and mark U. S. and State numbers; name in margin the post office to which each road leads).
- Rivers, creeks, lakes, etc. (show by wavy lines and name).
- County line (show by dashes).

### CIRCULAR DIAGRAM

Use this diagram if your post office is NOT located in an area described by section, township, and range.

Let the dot in the center of the circle represent your post office.

Then draw the features a, b, c, d, and e, as described above. (Note the scale of this diagram: One-quarter inch equals 1 mile.)



2<sup>nd</sup> Request

R.M.

F

DIVISION OF TOPOGRAPHY

POST OFFICE DEPARTMENT  
OFFICE OF THE  
FOURTH ASSISTANT POSTMASTER GENERAL  
WASHINGTON

DEC 17 1907



Sir:

In order that this office may determine, with as much accuracy as possible, the relative positions of Post Offices, so that they may be correctly delineated on its maps, please carefully answer the questions below, and furnish the diagram on the other side, returning the same as soon as possible, verified by your signature and dated.

Very respectfully,

*[Signature]*

Fourth Assistant Postmaster General.

To POSTMASTER AT Flushing  
Belmont Co,  
Ohio.

The (P. O. Dept.) name of my Office is Flushing

If the town, village, or site of the Post Office be known by another name than that of the Post Office, state that other name here: Flushing

The P. O. is situated in the N.W. quarter of Section No. 20, in Township 9 (north or ~~south~~), Range 5 (east or west), County of Belmont, State of Ohio

The name of the most prominent river near it is Ohio  
The name of the nearest creek is Whaling Creek  
This Office is 27 miles from said river, on the north side of it, and is      miles from said nearest creek, on the N.W. side of it.

My Office is on Mail Route No.       
My Office is a Special Office supplied from      miles distant.  
The name of the nearest Office on my route is     , and its distance is      miles, by the traveled road, in a      direction from this, my Office.  
The name of the nearest Office, on the same route, on the other side, is      and its distance is      miles in a      direction from this, my Office.

The name of the nearest Office off the route is Holloway, and its distance by the most direct road is 4 miles in a N.W. direction from this, my Office.

The name of the nearest railroad is Baltimore & Ohio

If on the line of or near the railroad, on which side and how far from the track is your Office located? East - 1/2 mile

(Signature of Postmaster.)

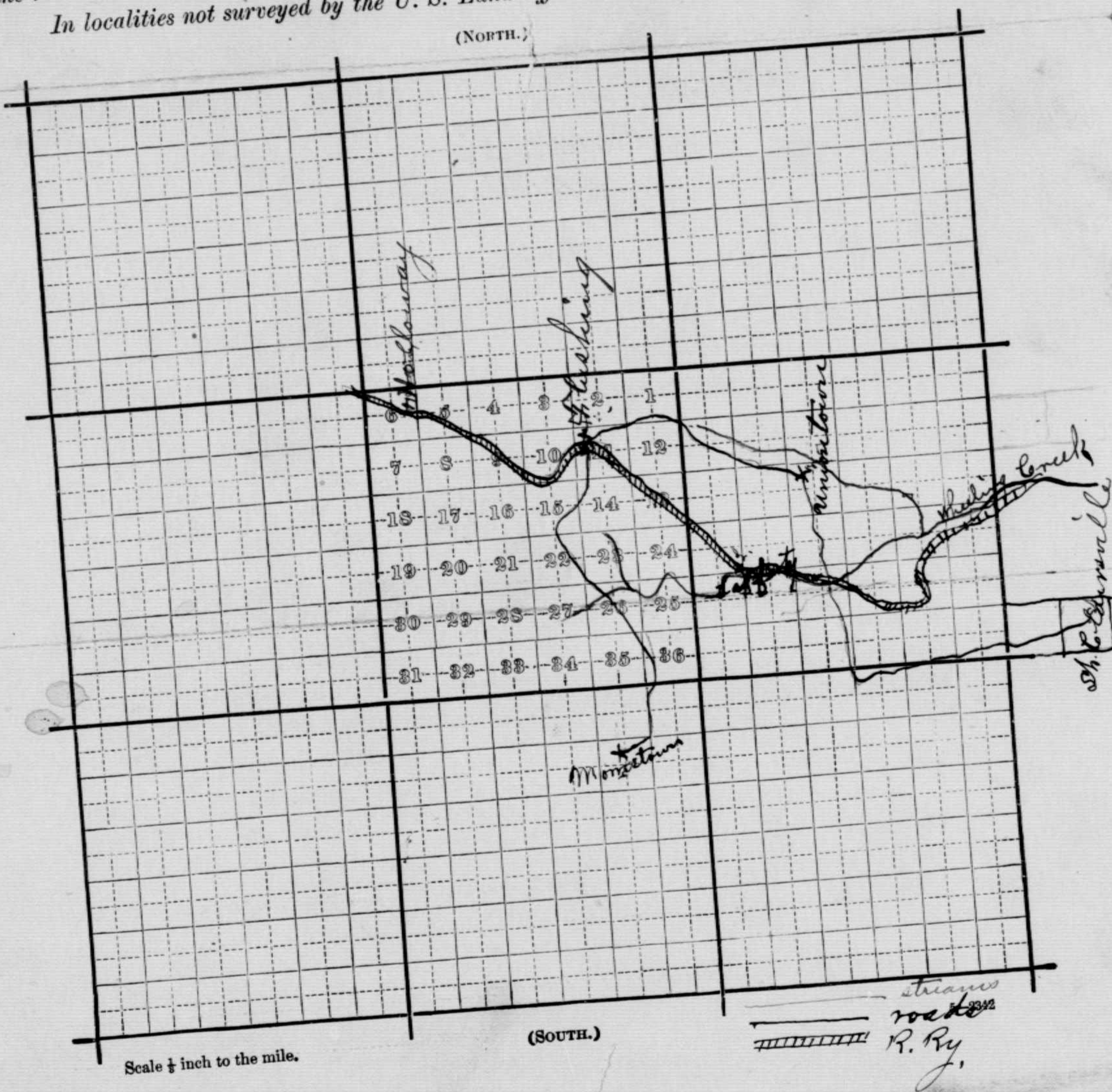
(Date.)

*[Signature]*  
Jan 1 1908

Diagram showing the site of the Washing Post Office  
 in Township 9 (N. of ~~S.~~), Range 25 (~~E. of~~ W.),  
 of 81 Principal Meridian, County of Belmont, State  
 of Ohio, with the adjacent Townships and Post Offices.

It is requested that the exact site of your Post Office, as also the roads to the adjoining  
 Offices, and the rivers and creeks, be marked on this diagram, to be returned as soon as possi-  
 ble to the Topographer's Office, Post Office Department. If on, or near a railroad, mark  
 the railroad and adjacent Station accurately.

In localities not surveyed by the U. S. Land Office, a **sketch** map is requested.



C

F

(101.)

Post Office Department,

TOPOGRAPHER'S OFFICE,

Washington, Dec 2<sup>nd</sup>, 1884.

Sir:

To enable the Topographer of this Department to determine, with as much accuracy as possible, the relative positions of Post Offices, so that they may be correctly delineated on its maps, the Postmaster General requests you to fill up the spaces below, and the diagram on fourth page, returning the same, verified by your signature and dated, under cover to this Office.

Respectfully, &c.,

*W. Nichols*

Topographer P. O. Dept.

TO POSTMASTER AT

*Flushing  
Belmont Co  
Ohio*

The (P. O. Dept.) name of my Office is

*Flushing, Belmont Co, Ohio.*

\* Its local name is

*Flushing*

It is situated in the

*North 1/2*

quarter of Section No. *29*, in Township

*No. 9 North*

(north or south), Range

*No 5 west*

(east or west), County

of

*Belmont*

, State of

*Ohio.*

The name of the most prominent river near it is

*Ohio.*

The name of the nearest creek is

*Wheeling*

This Office is

*21*

miles from said river, on the

*west*

side of it, and is

*4*

miles from said nearest creek, on the

*N.W.*

side of it.

The name of the nearest Office on route No. *21561* is

*Kennan*

, and its

distance is

*2 3/4*

miles, by the traveled road, in a

*Western*

direction from this my Office.

The name of the nearest Office, on the same route, on the other side, is

*End of Route*

and its distance is

*—*

miles in a

*—*

direction from this my Office.

The name of the nearest Office off the route is

*Halloway*

, and its

distance by the most direct road is

*4*

miles in a

*N. West*

direction from this my Office.

This office is at a distance of

*1/2 mile*

from the

*Flushing*

Station of

the

*B. & O. R.R.*

Railroad, on the

*North*

side of the railroad.

State, under this, the names of other Offices near your Office, in different directions from it, and their distances from it by the most direct roads.

*New Athens N East - Uniontown S East - Caspore  
with Munston S West - Oakdale S East -*

\* If the town, village, or site of the Post Office be known by another name than that of the Post Office, state that other name here, that it may be identified on the map of the State (or Territory).

A diagram of the township and sections (or, where the land is not so divided, a sketch map), showing the precise location of your Office, together with the adjoining Post Offices, towns, or villages, the roads, railroads, and larger streams or creeks, in addition to the above, will be useful, and is desired.—(See diagram blank accompanying this, to be filled up.)

(Signature of Postmaster.)

*W H Halloway*

(Date.)

*Dec 11 1884*

ELECTRO'S.



G

Please answer soon.

F

Post Office Department,

TOPOGRAPHER'S OFFICE,

Washington, April 9<sup>th</sup>, 1878.



Sir,

To enable the Topographer of this Department to determine, with as much accuracy as possible, the relative positions of Post Offices, so that they may be correctly delineated on its maps, the Postmaster General requests you to fill up the spaces and answer the questions below, and return the same, verified by your signature and dated, under cover to this Office.

Respectfully, &c.,

*W*

Topographer P. O. Dept.

TO POSTMASTER AT

*Flushing*  
*Belmont Co,*  
*Ohio*

The (P. O. Dept.) name of my Office is

*Flushing*

\* Its local name is

It is situated in the *North west* quarter of Section No. *20*, in Township

*Nine* (north or south), Range *Five* (east or west), County

of *Belmont*, State of *Ohio*

The name of the most prominent river near it is *The Ohio*

The name of the nearest creek is *Wheeling & Stillwater*

This Office is *2 1/2* miles from said river, on the *West* side of it, and is *on ridge* miles from said nearest creek, on the *South east* side of it. *Stillwater North west*

The name of the nearest Office on route No. *21276* is *Lennox*, and its distance is *3* miles, by the traveled road, in a *South west* direction from this my Office.

The name of the nearest Office, on the same route, on the other side, is *Uniontown* and its distance is *4* miles in a *South east* direction from this my Office.

The name of the nearest Office off the route is *New Athens*, and its distance by the most direct road is *6* miles in a *North east* direction from this my Office.

This Office is at a distance of *1/2* mile from the *not located* Station of the *Cleveland & Tuscarawas* Railroad, on the *North* side of the railroad.

State, under this, the names of all other Offices near your Office, in different directions from it, and their distances from it by the most direct roads. *Morristown seven miles*  
*Moorefield seven miles*

\* If the town, village, or site of the Post Office, be known by another name than that of the Post Office, state that other name here, that it may be identified on the map of the State (or Territory).

A diagram of the township and sections (or, where the land is not so divided, a sketch map,) showing the precise location of your Office, together with the adjoining Post Offices, towns, or villages, the roads, railroads, and larger streams or creeks, in addition to the above, will be useful, and is desired.—(See diagram blank accompanying this, to be filled up.)

(Signature of Postmaster.)

*E. W. Purviance*

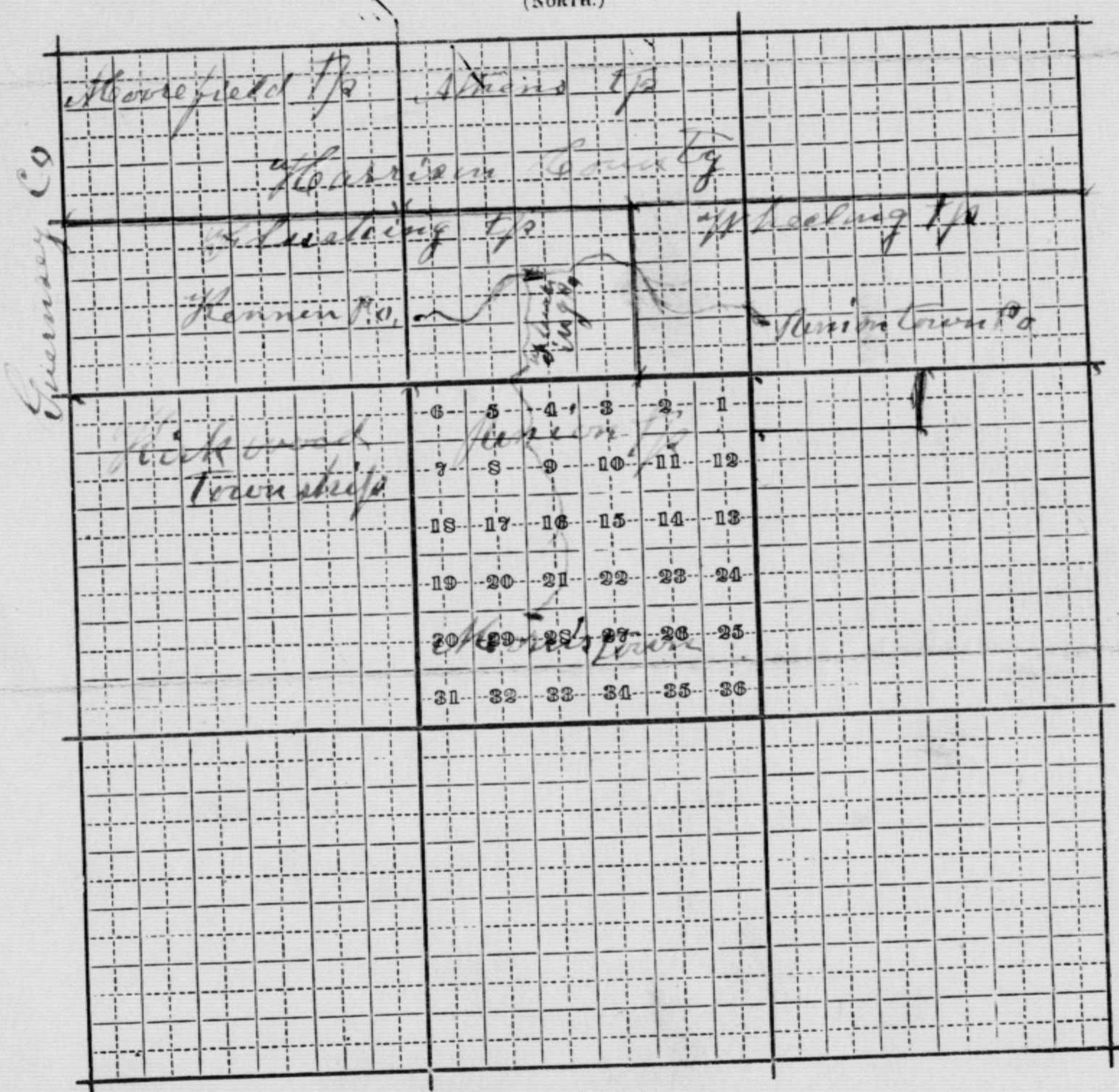
(Date.)

*May 2<sup>nd</sup> 1878*

Diagram showing the site of the Flushing Post Office  
 in Township Nine Range Five of Fourth Principal  
 Meridian, County of Belmont, State  
 of Ohio, with the adjacent Townships and Post  
 Offices.

It is requested that the exact site of the proposed, or existing Post Office, as also the roads to the adjoining Offices, and the larger streams or rivers, be marked on this diagram, to be returned as soon as possible to the Post Office Department. If on, or near a railroad, mark the railroad and adjacent Station accurately.

(NORTH.)



Scale  $\frac{1}{2}$  inch to the mile.

(SOUTH.)